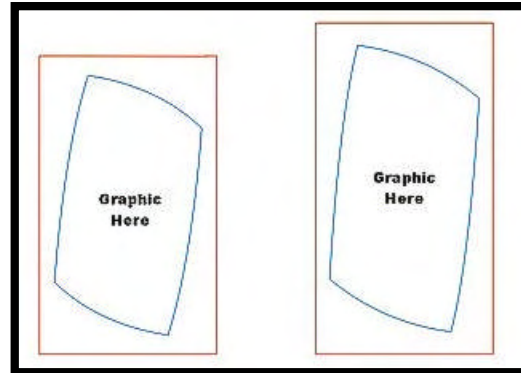


TECH TIP

Using the LaserBits Template CD's

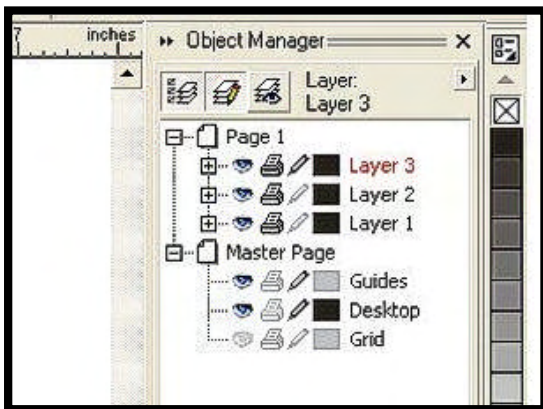
Each template is saved as a CorelDRAW version 8.0 file under the product part number from the LaserBits Laser Reference Guide. Once you have opened a product template you will notice that it has an outline of red, and in certain cases blue. If there are both colors in the template, the red outline designates the area the product will take up in your engraver, while the blue outline indicates the area to place your graphic or text. If you engrave outside the blue lines you will be engraving in an area that is not meant to be engraved in. Templates that do not have blue outline can be engraved anywhere within the red lines. We have also indicated the best areas for engraving on these products with "Graphic Here".



Sample of a typical template in CorelDRAW

About the Templates

Each template consists of two or three layers: A layer with the red outline for the product and a second layer where the graphic or text will be included. If a product template has a third layer it is the blue outline mentioned above. Your CD only has enabled change to the layer containing the "Graphic Here" text. Either type over the "Graphic Here" text with your text tool or import a graphic and position it where the "Graphic Here" text is.



Viewing your Layers in the Object Manager

Tips on Managing the Layers

- If you need to enable change to a layer, simply click the "Layout" button on the tool bar and drag down to "Object Manager". Once you have opened Object Manager you will notice the icon "Page 1". Included beneath Page 1 are the icons Layer 1, Layer 2 and possibly Layer 3.
- Each layer will be accompanied with an icon of an eye, a printer and a pen. The eye makes the layer viewable, the printer makes the layer printable and the pen makes the layer editable. Click on the pen icon so that it is highlighted. Now you will be able to make changes to Layer 1 and Layer 3.

Printing to the Laser

1. Choose what layers you will want to include in the printing job. As explained above, this is done through the Object Manager, which is found under "Layout" on the toolbar.
2. Click on the printer icon for the layers you wish to include in your job. The icon will be highlighted once chosen.
3. After you have chosen the jobs to be printed, ALWAYS conduct a "Print Preview" to make sure the desired objects are to be engraved.
4. Once the objects are correctly chosen "Print" the job over to your laser engraver. Now you are ready to engrave your product.



24410 North 20th Drive, Phoenix, AZ 85085 U.S.A.

Tel: 1-800-733-7705 Fax: 623-879-5149 Email: orderdesk@laserbits.com Website: www.laserbits.com

COPYRIGHT © LASERBITS, INC.